

INFORAMA

Amt für Landwirtschaft
und Natur
des Kantons Bern

Office de l'agriculture
et de la nature
du canton de Berne

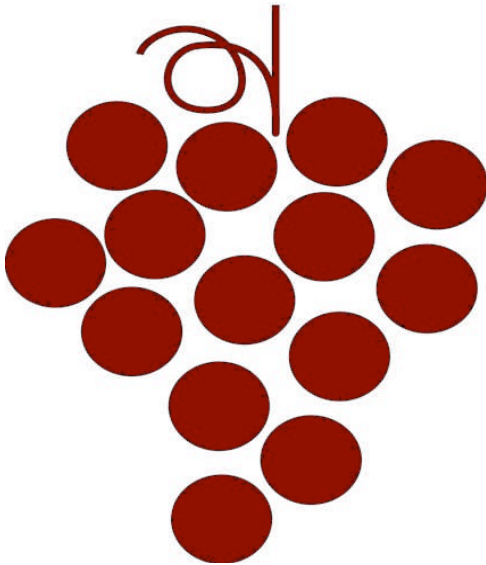


Fachstelle für Rebbau
Oeschberg, 3425 Koppigen
Telefon 034 413 70 20

Service de la viticulture

www.inforama.ch
info.fob@vol.be.ch

Jürg Maurer
Direktwahl 034 413 70 25
juerg.maurer@vol.be.ch



Weinbau Kanton Bern 2014

- AOC Bestimmungen
- Allgemeine Angaben
- Flächen- und Sortenstatistik
- Resultate der Weinlesekontrolle

26. November 2014

Erläuterungen zum Traubenpass 2014

Mengen- und Qualitätsbegrenzungen

Grundlagen:

- Weinverordnung vom 1.1.2008 (916.140)
- Gesetz über den Rebbau (RebG) Bern vom 13.9.1995 (916.141.1)
- AOC Reglement Bern vom 1.5.2012 BSG-Nr. 916.141.111.3

1. Trauben mit kontrollierter Ursprungsbezeichnung (KUB/AOC)

Bielersee

Mindestzuckergehalte

| | Brix / Oe | Sorten |
|-------------|------------------|--|
| Kategorie 1 | 15.4 / 62.8 | Gutedel/Chasselas |
| Kategorie 2 | 16.2 / 66.2 | Riesling-Silvaner |
| Kategorie 3 | 17.0 / 69.7 | Muscat, Nobling, Seyval, Reselle |
| Kategorie 4 | 18.0 / 74.1 | Cabernet franc, Cabernet Sauvignon, Chambourcin, Dakapo, Dornfelder, Dunkelfelder, Gamay, Garanoir, Reichensteiner, Regent, Syrah, Zweigelt, Bianca, Charmont, Johanniter, Riesling, Sylvaner, Viognier |
| Kategorie 5 | 18.6 / 76.7 | Blauburgunder, Blaufränkisch, Cabernet Cortis, Cabernet Dorsa, Cabernet Jura, Cabernet Mytos, Cabernet Cantor, Cabernet Carbon, Cabernet Carol, Cabertin, Cal-1-20, Carminoir, Diolinoir, Divico, Gamaret, Léon Millot, Mara, Malbec, Maréchal Foch, Merlot, Pinot Meunier, Prior, St. Laurent, VB 91-26-04, Bouvier, Chardonnay, Pinot blanc, Pinot gris, Sauvignon blanc, Sauvignon gris |
| Kategorie 6 | 19.6 / 81.1 | Freisamer, Gewürztraminer, Kerner, Solaris |

Maximalerträge

| | |
|-----------------------|--------------------------------------|
| 1.2 kg/m ² | Gutedel/Chasselas, Riesling-Silvaner |
| 1.0 kg/m ² | restliche Sorten Rot und Weiss |

2. Trauben für Landweine

| | | |
|----------------|-----------------------|-----------|
| Weisse Sorten: | 1,8 kg/m ² | 14.4 Brix |
| Rote Sorten: | 1,6 kg/m ² | 15.2 Brix |

3. Trauben für Tafelwein

| | | |
|----------------|----------------------|-----------|
| Weisse Sorten: | keine Mengengrenzung | 13.6 Brix |
| Rote Sorten: | keine Mengengrenzung | 14.4 Brix |

- Alle Trauben und Moste müssen nach den drei Kategorien getrennt eingekellert und vinifiziert werden.
- Vorderseite dieses Formulars: Pro bewirtschaftete Fläche höchstzulässige Traubenmenge. Die Angaben gemäss Agrardatenerhebung (Selbstdeklaration!). Später festgestellte Abweichungen bleiben vorbehalten! Angaben für Land- und Tafelwein auf persönliche Rückmeldung.
- Traubengut ohne Traubenpass muss separat eingekellert und deklariert werden. Dieser Wein darf nicht etikettiert werden und in den Verkauf gelangen.
- Das Formular bleibt im Besitz des Bewirtschafters und ist dem Einkellerer vorzuweisen.
- Bei Übermengen oder zu tiefem Mindestzuckergehalt wird der ganze Posten deklassiert.

Jürg Maurer, Rebbaukommissär, Inforama Oeschberg

Erläuterungen zum Traubenpass 2014

Mengen- und Qualitätsbegrenzungen

Grundlagen:

- Weinverordnung vom 1.1.2008 (916.140)
- Gesetz über den Rebbau (RebG) Bern vom 13.9.1995 (916.141.1)
- AOC Reglement Bern vom 1.5.2012 BSG-Nr. 916.141.111.3

1. Trauben mit kontrollierter Ursprungsbezeichnung (KUB/AOC)

Thunersee und übriges Kantonsgebiet

Mindestzuckergehalte

| | Brix / Oe | Sorten |
|-------------|------------------|---|
| Kategorie 1 | 15.4 / 62.8 | Elbling, Gutedel |
| Kategorie 2 | 16.2 / 66.2 | Riesling-Silvaner |
| Kategorie 3 | 17.0 / 69.7 | Muscat, Seyval |
| Kategorie 4 | 18.0 / 74.1 | Dornfelder, Dunkelfelder, Garanoir, Mara, Regent, Zweigelt |
| Kategorie 5 | 18.6 / 76.7 | Blauburgunder, Blaufränkisch, Cabernet Dorsa, Cabernet Jura, Diolinoir, Divico, Gamaret, Gamay, Léon Millot, Maréchal Foch, Chardonnay, Pinot gris, Sauvignon blanc, VB 32-07 |
| Kategorie 6 | 19.6 / 81.1 | Gewürztraminer, Solaris |

Maximalerträge

| | |
|-----------------------|--------------------------------|
| 1.3 kg/m ² | Elbling, Riesling-Silvaner |
| 1.2 kg/m ² | Gutedel |
| 1.0 kg/m ² | restliche Sorten Rot und Weiss |

2. Trauben für Landweine

| | | |
|----------------|-----------------------|-----------|
| Weisse Sorten: | 1,8 kg/m ² | 14.4 Brix |
| Rote Sorten: | 1,6 kg/m ² | 15.2 Brix |

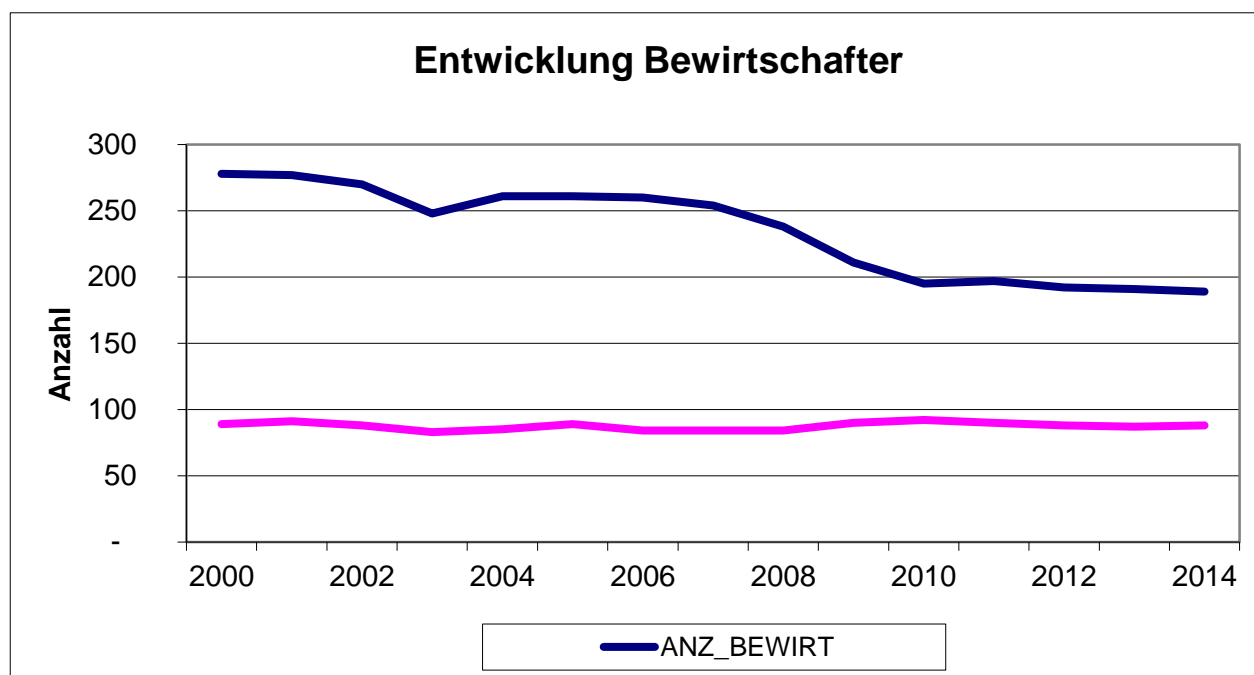
3. Trauben für Tafelwein

| | | |
|----------------|------------------------|-----------|
| Weisse Sorten: | keine Mengenbegrenzung | 13.6 Brix |
| Rote Sorten: | keine Mengenbegrenzung | 14.4 Brix |

- Alle Trauben und Moste müssen nach den drei Kategorien getrennt eingekellert und vinifiziert werden.
- Vorderseite dieses Formulars: Pro bewirtschaftete Fläche höchstzulässige Traubenmenge. Die Angaben gemäss Agrardatenerhebung (Selbstdeklaration!). Später festgestellte Abweichungen bleiben vorbehalten! Angaben für Land- und Tafelwein auf persönliche Rückmeldung.
- Traubengut ohne Traubenpass muss separat eingekellert und deklariert werden. Dieser Wein darf nicht etikettiert werden und in den Verkauf gelangen.
- Das Formular bleibt im Besitz des Bewirtschafters und ist dem Einkellerer vorzuweisen.
- Bei Übermengen oder zu tiefem Mindestzuckergehalt wird der ganze Posten deklassiert.

Jürg Maurer, Rebbaukommissär, Inforama Oeschberg

Bewirtschafter und Einkellerer (mit Standort Kanton Bern):



Weinlesekontrolle 2014:

Anzahl Bewirtschafter: 189

Anzahl Einkellerer: 88

Risikobasierte Stichprobenkontrolle durch KUL: 31

Deklassierte Mengen anlässlich WLK 2014:

keine; die Maximalmengen und der Mindestzuckergehalt wurden überall eingehalten

- 464 kg, 21.1 Brix Sorte Gallota, Bielersee, musste als Landwein deklariert werden (Sorte ist nicht im AOC Reglement aufgeführt)

Flächen- und Sortenstatistik

Sortenliste und Flächen mit Traubenpass BE 2014 in Aren

242.59 Hektaren Rebfläche davon:

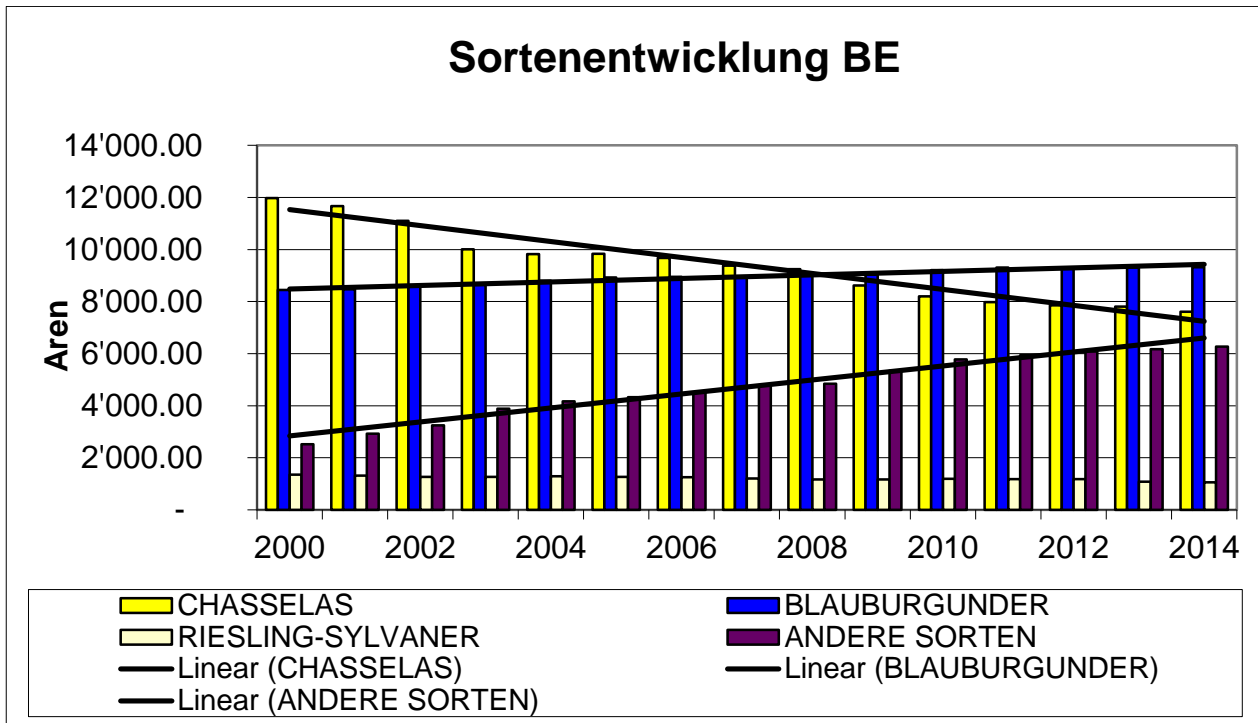
128.57 Hektaren weisse Sorten

114.02 Hektaren rote Sorten

| Jahr | Code | Rebsorte | 22'052.07 | 1'855.31 | 352.09 | 24'259.47 | rot/weiss |
|------|-------|--------------------------|-----------|-----------|----------------|-------------------|-----------------|
| | | | Bieleree | Thunersee | Übriges Gebiet | Total Kanton Bern | |
| 2014 | 70101 | Gutedel/Chasselas | 7'586.84 | - | 27.92 | 7'614.76 | Weisse Rebsorte |
| 2014 | 70102 | Pinot Noir | 8'521.37 | 681.00 | 115.52 | 9'317.89 | Rote Rebsorte |
| 2014 | 70103 | Riesling-Silvaner | 351.45 | 668.68 | 40.75 | 1'060.88 | Weisse Rebsorte |
| 2014 | 70104 | Riesling | 35.29 | - | - | 35.29 | Weisse Rebsorte |
| 2014 | 70105 | Sylvaner | 66.20 | - | - | 66.20 | Weisse Rebsorte |
| 2014 | 70106 | Freisamer | 63.38 | - | - | 63.38 | Weisse Rebsorte |
| 2014 | 70107 | Chardonnay | 1'197.63 | 4.00 | 0.70 | 1'202.33 | Weisse Rebsorte |
| 2014 | 70108 | Pinot gris | 1'059.62 | 45.78 | - | 1'105.40 | Weisse Rebsorte |
| 2014 | 70109 | Pinot blanc | 170.06 | - | - | 170.06 | Weisse Rebsorte |
| 2014 | 70110 | Gewürztraminer | 152.35 | 8.32 | - | 160.67 | Weisse Rebsorte |
| 2014 | 70111 | Elbling | NULL | 2.40 | - | 2.40 | Weisse Rebsorte |
| 2014 | 70112 | Bianca | 52.99 | - | - | 52.99 | Weisse Rebsorte |
| 2014 | 70113 | Zweigelt | 54.79 | - | 0.70 | 55.49 | Rote Rebsorte |
| 2014 | 70114 | Diolinoir | 82.37 | 12.00 | - | 94.37 | Rote Rebsorte |
| 2014 | 70115 | Sauvignon blanc | 872.06 | - | - | 872.06 | Weisse Rebsorte |
| 2014 | 70116 | Gamay | 13.00 | - | - | 13.00 | Rote Rebsorte |
| 2014 | 70117 | Gamaret | 301.27 | 35.32 | - | 336.59 | Rote Rebsorte |
| 2014 | 70118 | Garanoir | 112.24 | 42.02 | - | 154.26 | Rote Rebsorte |
| 2014 | 70119 | Léon Millot | 14.30 | 3.00 | 4.94 | 22.24 | Rote Rebsorte |
| 2014 | 70120 | Nobling | 31.65 | - | - | 31.65 | Weisse Rebsorte |
| 2014 | 70121 | Seyval | 40.53 | 1.70 | - | 42.23 | Weisse Rebsorte |
| 2014 | 70122 | Syrah | 82.03 | - | - | 82.03 | Rote Rebsorte |
| 2014 | 70123 | Muscat | 64.95 | 16.54 | 4.50 | 85.99 | Weisse Rebsorte |
| 2014 | 70124 | Regent | 154.58 | 176.43 | 21.51 | 352.52 | Rote Rebsorte |
| 2014 | 70126 | Cabernet-Sauvignon | 28.39 | - | - | 28.39 | Rote Rebsorte |
| 2014 | 70127 | Malbec | 155.93 | - | - | 155.93 | Rote Rebsorte |
| 2014 | 70128 | Dornfelder | 71.58 | - | - | 71.58 | Rote Rebsorte |
| 2014 | 70129 | St. Laurent | 46.78 | - | - | 46.78 | Rote Rebsorte |
| 2014 | 70130 | Bouvier | 3.50 | - | - | 3.50 | Weisse Rebsorte |
| 2014 | 70131 | Viognier | 17.19 | - | - | 17.19 | Weisse Rebsorte |
| 2014 | 70133 | Merlot | 40.19 | - | - | 40.19 | Rote Rebsorte |
| 2014 | 70134 | Charmont | 13.65 | - | - | 13.65 | Weisse Rebsorte |
| 2014 | 70135 | Johanniter | 110.76 | - | 5.00 | 115.76 | Weisse Rebsorte |
| 2014 | 70136 | Chambourcin | 6.35 | - | - | 6.35 | Rote Rebsorte |
| 2014 | 70137 | Pinot Meunier | 4.31 | - | - | 4.31 | Rote Rebsorte |
| 2014 | 70138 | Carminoir | 4.87 | - | - | 4.87 | Rote Rebsorte |
| 2014 | 70139 | Solaris | 31.99 | 25.30 | 32.74 | 90.03 | Weisse Rebsorte |
| 2014 | 70140 | Cabernet Dorsa | 75.65 | 39.33 | - | 114.98 | Rote Rebsorte |
| 2014 | 70141 | Kerner | 3.26 | - | - | 3.26 | Weisse Rebsorte |
| 2014 | 70142 | Reichensteiner | 2.50 | - | - | 2.50 | Rote Rebsorte |
| 2014 | 70143 | Cabernet Mytos | 15.10 | - | - | 15.10 | Rote Rebsorte |
| 2014 | 70144 | Cabernet Jura | 65.43 | 40.25 | 61.99 | 167.67 | Rote Rebsorte |
| 2014 | 70145 | Dakapo | 17.27 | - | - | 17.27 | Rote Rebsorte |
| 2014 | 70147 | Cabernet Cortis | 14.58 | - | - | 14.58 | Rote Rebsorte |
| 2014 | 70148 | VB 91-26-04 | 17.76 | - | - | 17.76 | Rote Rebsorte |
| 2014 | 70149 | Cabertin | 10.70 | - | - | 10.70 | Rote Rebsorte |
| 2014 | 70150 | Dunkelfelder | 19.39 | - | - | 19.39 | Rote Rebsorte |
| 2014 | 70152 | VB 91-26-27 | NULL | - | 5.00 | 5.00 | Rote Rebsorte |
| 2014 | 70153 | Mara | 69.90 | 21.42 | - | 91.32 | Rote Rebsorte |
| 2014 | 70154 | Cal 1-20 | 18.00 | - | - | 18.00 | Rote Rebsorte |
| 2014 | 70155 | Prior | 9.21 | - | - | 9.21 | Rote Rebsorte |
| 2014 | 70156 | Cabernet Cantor | 9.70 | - | - | 9.70 | Rote Rebsorte |
| 2014 | 70157 | Cabernet franc | 3.90 | - | - | 3.90 | Rote Rebsorte |
| 2014 | 70158 | Cabernet Carbon | 6.21 | - | - | 6.21 | Rote Rebsorte |
| 2014 | 70159 | VB 32-07 | - | 27.82 | - | 27.82 | Weisse Rebsorte |
| 2014 | 70160 | Cabernet Carol | 12.27 | - | - | 12.27 | Rote Rebsorte |
| 2014 | 70161 | Reselle | 19.74 | - | - | 19.74 | Weisse Rebsorte |

| | | | | | | | |
|------|-------|---------------|-------|------|-------|-------|---------------|
| 2014 | 70162 | Teinturier | 1.80 | - | - | 1.80 | Rote Rebsorte |
| 2014 | 70177 | Maréchal Foch | 36.04 | 4.00 | 30.82 | 70.86 | Rote Rebsorte |
| 2014 | 70183 | Gallota | 7.22 | - | - | 7.22 | Rote Rebsorte |

Sortenentwicklung Hauptsorten

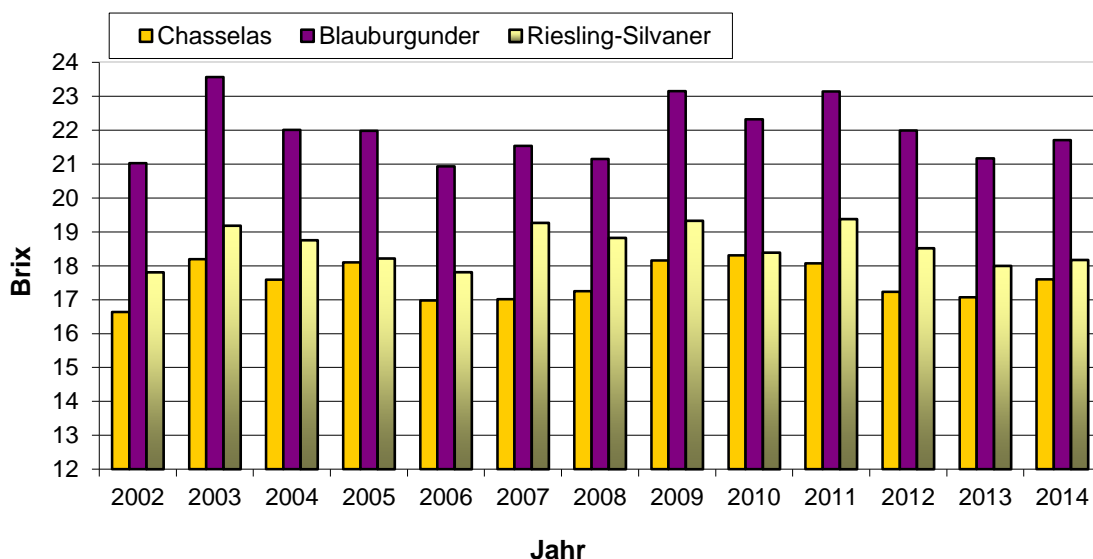


Resultate der Weinlesekontrolle

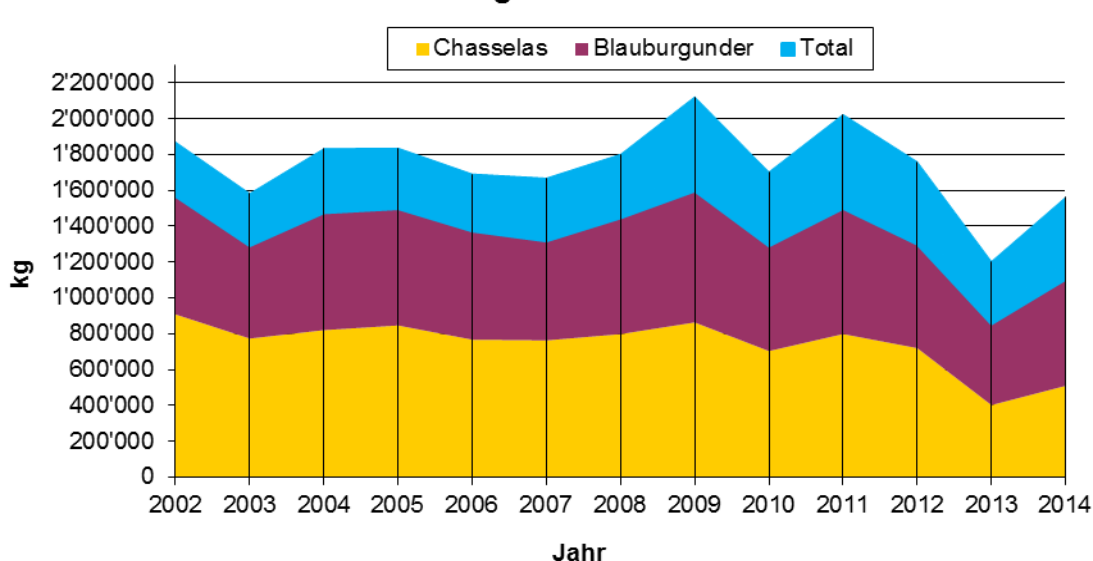
Hauptsorten

| | Chasselas | | Blauburgunder | | Riesling-Silvaner | | andere Sorten | Total |
|------|-----------|-------|---------------|-------|-------------------|-------|---------------|-----------|
| | kg | Brix | kg | Brix | kg | Brix | kg | |
| 2002 | 908'518 | 16.63 | 658'004 | 21.03 | 102'753 | 17.81 | 200'553 | 1'869'828 |
| 2003 | 773'947 | 18.20 | 515'996 | 23.57 | 113'754 | 19.18 | 179'176 | 1'582'873 |
| 2004 | 821'008 | 17.59 | 653'568 | 22.01 | 123'350 | 18.76 | 235'260 | 1'854'527 |
| 2005 | 846'707 | 18.11 | 650'757 | 21.98 | 95'186 | 18.22 | 243'313 | 1'847'499 |
| 2006 | 767'808 | 16.97 | 604'485 | 20.93 | 71'397 | 17.81 | 247'633 | 1'701'443 |
| 2007 | 763'462 | 17.01 | 553'445 | 21.54 | 91'630 | 19.27 | 259'998 | 1'695'741 |
| 2008 | 798'834 | 17.25 | 647'110 | 21.15 | 86'406 | 18.83 | 268'878 | 1'840'626 |
| 2009 | 863'668 | 18.16 | 732'456 | 23.15 | 106'667 | 19.33 | 419'522 | 2'122'313 |
| 2010 | 704'231 | 18.31 | 585'001 | 22.32 | 101'125 | 18.39 | 312'725 | 1'703'082 |
| 2011 | 799'120 | 18.07 | 699'185 | 23.14 | 119'567 | 19.38 | 406'091 | 2'023'963 |
| 2012 | 720'695 | 17.23 | 578'492 | 21.99 | 102'009 | 18.52 | 358'794 | 1'759'989 |
| 2013 | 402'482 | 17.07 | 451'766 | 21.17 | 93'373 | 18.00 | 255'728 | 1'203'349 |
| 2014 | 510'075 | 17.60 | 593'061 | 21.71 | 89'464 | 18.17 | 369'097 | 1'561'697 |

Uebersicht Brix 2002 - 2014 Kanton Bern



Uebersicht Erntemenge Kanton Bern 2002 - 2014

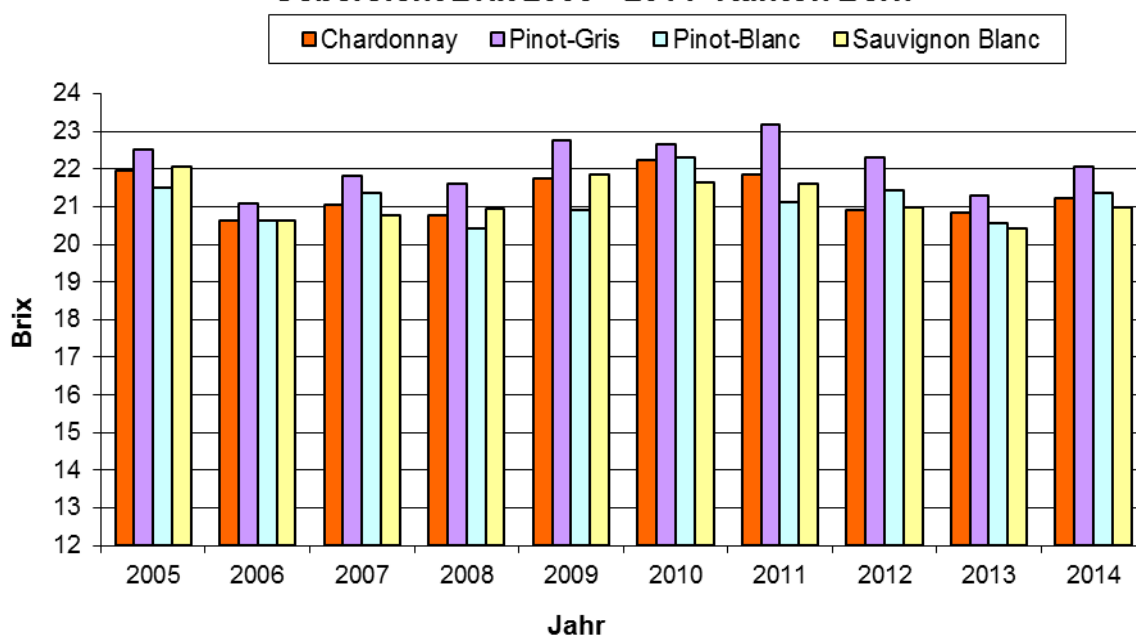


Resultate der Weinlesekontrolle

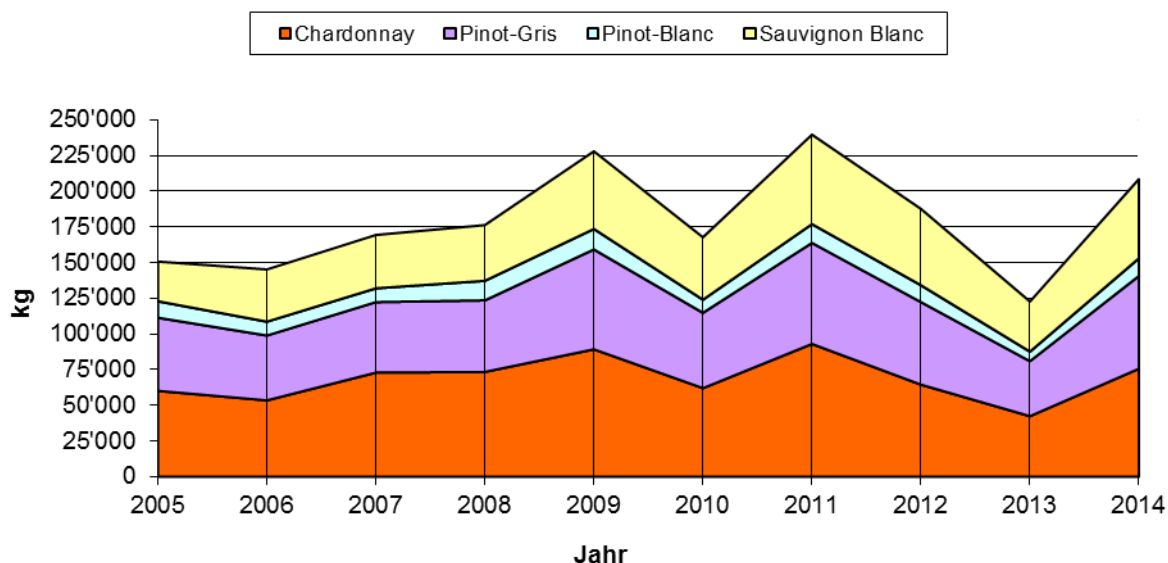
Weisse Spezialitäten

| | Chardonnay | | Pinot-Gris | | Pinot-Blanc | | Sauvignon Blanc | | |
|------|------------|-------|------------|-------|-------------|-------|-----------------|-------|--|
| | kg | Brix | kg | Brix | kg | Brix | kg | Brix | |
| 2005 | 60'189 | 21.95 | 51'240 | 22.50 | 11'538 | 21.49 | 27'814 | 22.07 | |
| 2006 | 53'516 | 20.63 | 45'435 | 21.10 | 9'722 | 20.63 | 36'603 | 20.63 | |
| 2007 | 72'986 | 21.04 | 49'415 | 21.83 | 9'644 | 21.38 | 37'405 | 20.76 | |
| 2008 | 73'448 | 20.77 | 50'164 | 21.62 | 13'679 | 20.43 | 39'075 | 20.93 | |
| 2009 | 89'290 | 21.74 | 69'978 | 22.76 | 14'377 | 20.90 | 54'404 | 21.86 | |
| 2010 | 62'065 | 22.23 | 52'807 | 22.67 | 9'179 | 22.30 | 43'750 | 21.63 | |
| 2011 | 93'039 | 21.86 | 70'816 | 23.17 | 13'185 | 21.11 | 62'693 | 21.59 | |
| 2012 | 64'539 | 20.91 | 57'844 | 22.31 | 11'808 | 21.44 | 53'489 | 20.99 | |
| 2013 | 42'455 | 20.84 | 38'526 | 21.31 | 6'680 | 20.57 | 35'097 | 20.43 | |
| 2014 | 75'696 | 21.22 | 65'069 | 22.06 | 12'337 | 21.34 | 55'512 | 20.99 | |

Uebersicht Brix 2005 - 2014 Kanton Bern



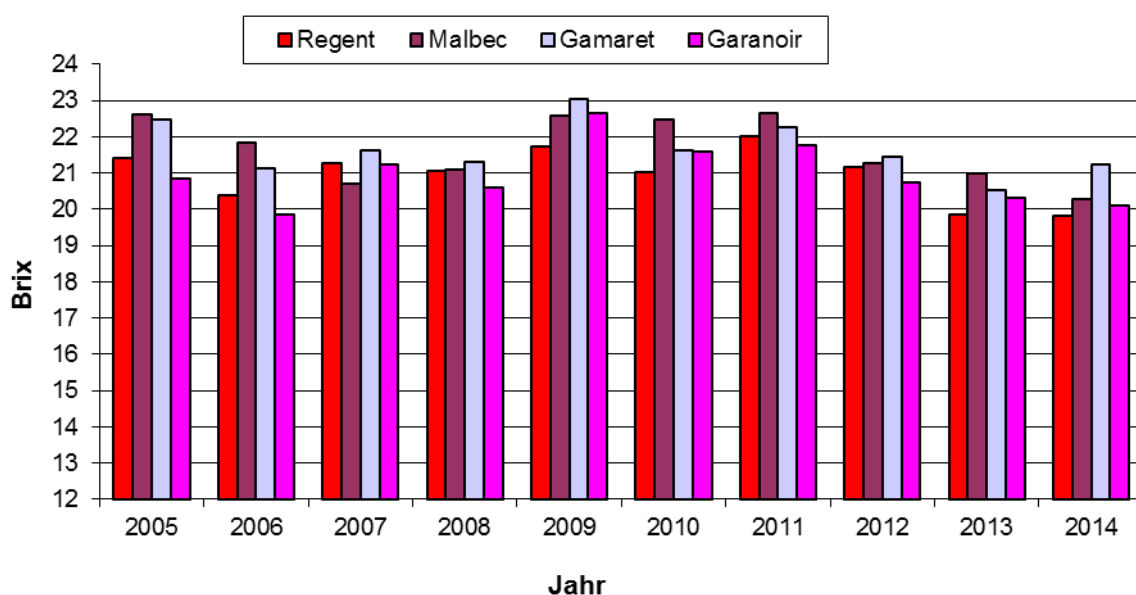
Uebersicht Erntemenge Kanton Bern 2005 - 2014



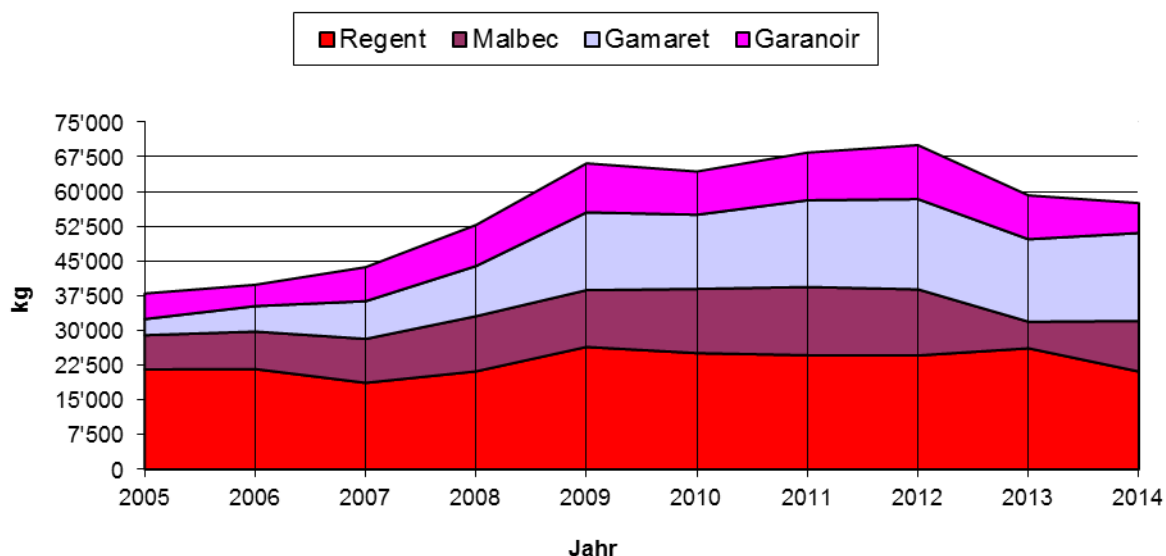
Rote Spezialitäten

| | Regent | | Malbec | | Gamaret | | Garanoir | |
|------|--------|-------|--------|-------|---------|-------|----------|-------|
| | kg | Brix | kg | Brix | kg | Brix | kg | Brix |
| 2005 | 21'603 | 21.41 | 7'390 | 22.62 | 3'479 | 22.48 | 5'516 | 20.84 |
| 2006 | 21'681 | 20.37 | 8'096 | 21.82 | 5'496 | 21.12 | 4'600 | 19.85 |
| 2007 | 18'699 | 21.27 | 9'498 | 20.72 | 8'143 | 21.63 | 7'339 | 21.23 |
| 2008 | 21'192 | 21.07 | 11'907 | 21.10 | 10'834 | 21.30 | 8'871 | 20.60 |
| 2009 | 26'460 | 21.72 | 12'261 | 22.58 | 16'806 | 23.03 | 10'565 | 22.65 |
| 2010 | 25'119 | 21.02 | 13'877 | 22.47 | 16'014 | 21.64 | 9'329 | 21.59 |
| 2011 | 24'676 | 22.00 | 14'725 | 22.67 | 18'740 | 22.27 | 10'280 | 21.75 |
| 2012 | 24'623 | 21.18 | 14'275 | 21.26 | 19'491 | 21.46 | 11'648 | 20.73 |
| 2013 | 26'165 | 19.86 | 5'745 | 20.98 | 17'801 | 20.52 | 9'474 | 20.33 |
| 2014 | 21'143 | 19.80 | 10'932 | 20.28 | 18'984 | 21.24 | 6'466 | 20.10 |

Uebersicht Brix 2005 - 2014 Erntemengen Kanton Bern



Uebersicht Erntemenge Kanton Bern 2005 - 2014



Erntestatistik: Total geerntete Traubenmengen

| Sorte | Im Kanton Bern geerntete Menge | | | | | | | | | | | | Eingekellert aus anderen Kantonen | | | | | | Gesamttotal | |
|--------------------------|--------------------------------|-------|-------------------|-----------|-------|-------------------|---------------|-------|-------------------|-------------|-------|-------------------|-----------------------------------|------|------|------|------------|------|-------------|-------|
| | Bielersee | | | Thunersee | | | übrige Region | | | Kanton Bern | | | Neuchâtel | | Vaud | | andere Kt. | | | |
| | kg | Brix | kg/m ² | kg | Brix | kg/m ² | kg | Brix | kg/m ² | kg | Brix | kg/m ² | kg | Brix | kg | Brix | kg | Brix | | |
| Gutedel/Chasselas | 507'375 | 17.60 | 0.682 | | | | 2'700 | 16.79 | 0.967 | 510'075 | 17.60 | 0.683 | | | | | | | 510'075 | 17.60 |
| Blauburgunder/Pinot Noir | 549'476 | 21.76 | 0.656 | 37'644 | 21.38 | 0.553 | 5'941 | 19.33 | 0.568 | 593'061 | 21.71 | 0.647 | | | | | | | 593'061 | 21.71 |
| Riesling-Silvaner | 29'883 | 19.04 | 0.850 | 55'960 | 17.74 | 0.837 | 3'621 | 17.68 | 0.889 | 89'464 | 18.17 | 0.843 | | | | | | | 89'464 | 18.17 |
| Riesling | 2'491 | 19.91 | 0.706 | | | | | | | 2'491 | 19.91 | 0.706 | | | | | | | 2'491 | 19.91 |
| Sylvaner | 4'305 | 20.69 | 0.650 | | | | | | | 4'305 | 20.69 | 0.650 | | | | | | | 4'305 | 20.69 |
| Freisamer | 2'735 | 23.28 | 0.432 | | | | | | | 2'735 | 23.28 | 0.432 | | | | | | | 2'735 | 23.28 |
| Chardonnay | 75'346 | 21.21 | 0.639 | 320 | 21.80 | 0.800 | 30 | 20.30 | 0.429 | 75'696 | 21.22 | 0.639 | | | | | | | 75'696 | 21.22 |
| Pinot gris | 63'613 | 21.99 | 0.600 | 1'456 | 24.90 | 0.318 | | | | 65'069 | 22.06 | 0.589 | | | | | | | 65'069 | 22.06 |
| Pinot blanc | 12'337 | 21.34 | 0.725 | | | | | | | 12'337 | 21.34 | 0.725 | | | | | | | 12'337 | 21.34 |
| Gewürztraminer | 6'370 | 21.71 | 0.418 | 165 | 21.00 | 0.198 | | | | 6'535 | 21.69 | 0.407 | | | | | | | 6'535 | 21.69 |
| Elbling | | | | 230 | 18.90 | 0.958 | | | | 230 | 18.90 | 0.958 | | | | | | | 230 | 18.90 |
| Bianca | 4'400 | 20.66 | 0.830 | | | | | | | 4'400 | 20.66 | 0.830 | | | | | | | 4'400 | 20.66 |
| Zweigelt | 5'162 | 20.24 | 0.942 | | | | 69 | 21.60 | 0.986 | 5'231 | 20.26 | 0.943 | | | | | | | 5'231 | 20.26 |
| Diolinoir | 6'416 | 21.04 | 0.779 | 1'110 | 22.54 | 0.925 | | | | 7'526 | 21.26 | 0.797 | | | | | | | 7'526 | 21.26 |
| Sauvignon blanc | 55'512 | 20.99 | 0.683 | | | | | | | 55'512 | 20.99 | 0.683 | | | | | | | 55'512 | 20.99 |
| Gamay | 1'247 | 20.84 | 0.959 | | | | | | | 1'247 | 20.84 | 0.959 | | | | | | | 1'247 | 20.84 |
| Gamaret | 16'294 | 21.54 | 0.554 | 2'690 | 19.40 | 0.762 | | | | 18'984 | 21.24 | 0.576 | | | | | | | 18'984 | 21.24 |
| Garanoir | 4'731 | 20.62 | 0.422 | 1'735 | 18.68 | 0.413 | | | | 6'466 | 20.10 | 0.419 | | | | | | | 6'466 | 20.10 |
| Léon Millot | 966 | 21.95 | 0.676 | | | | 105 | 20.00 | 0.330 | 1'071 | 21.76 | 0.613 | | | | | | | 1'071 | 21.76 |
| Nobling | 2'900 | 20.18 | 0.916 | | | | | | | 2'900 | 20.18 | 0.916 | | | | | | | 2'900 | 20.18 |
| Seyval | 3'675 | 19.45 | 0.907 | 135 | 18.00 | 0.794 | | | | 3'810 | 19.40 | 0.902 | | | | | | | 3'810 | 19.40 |
| Syrah | 5'419 | 19.54 | 0.661 | | | | | | | 5'419 | 19.54 | 0.661 | | | | | | | 5'419 | 19.54 |
| Muscat | 4'547 | 19.11 | 0.700 | 900 | 18.50 | 0.544 | 150 | 19.40 | 0.333 | 5'597 | 19.02 | 0.651 | | | | | | | 5'597 | 19.02 |
| Regent | 11'035 | 20.10 | 0.714 | 8'819 | 19.58 | 0.500 | 1'289 | 18.75 | 0.831 | 21'143 | 19.80 | 0.610 | | | | | | | 21'143 | 19.80 |
| Cabernet-Sauvignon | 1'365 | 20.81 | 0.481 | | | | | | | 1'365 | 20.81 | 0.481 | | | | | | | 1'365 | 20.81 |
| Malbec | 10'932 | 20.28 | 0.823 | | | | | | | 10'932 | 20.28 | 0.823 | | | | | | | 10'932 | 20.28 |
| Dornfelder | 1'960 | 20.11 | 0.274 | | | | | | | 1'960 | 20.11 | 0.274 | | | | | | | 1'960 | 20.11 |
| St. Laurent | 2'327 | 20.87 | 0.497 | | | | | | | 2'327 | 20.87 | 0.497 | | | | | | | 2'327 | 20.87 |
| Bouvier | 300 | 19.20 | 0.857 | | | | | | | 300 | 19.20 | 0.857 | | | | | | | 300 | 19.20 |
| Viognier | 1'024 | 19.59 | 0.596 | | | | | | | 1'024 | 19.59 | 0.596 | | | | | | | 1'024 | 19.59 |
| Merlot | 1'348 | 20.21 | 0.515 | | | | | | | 1'348 | 20.21 | 0.515 | | | | | | | 1'348 | 20.21 |
| Charmont | 1'242 | 18.43 | 0.910 | | | | | | | 1'242 | 18.43 | 0.910 | | | | | | | 1'242 | 18.43 |
| Johanniter | 4'629 | 20.31 | 0.418 | | | | 333 | 20.70 | 0.666 | 4'962 | 20.33 | 0.429 | | | | | | | 4'962 | 20.33 |
| Chambourcin | 600 | 18.90 | 0.945 | | | | | | | 600 | 18.90 | 0.945 | | | | | | | 600 | 18.90 |
| Pinot Meunier | 290 | 19.80 | 0.673 | | | | | | | 290 | 19.80 | 0.673 | | | | | | | 290 | 19.80 |
| Carminoir | 260 | 20.50 | 0.534 | | | | | | | 260 | 20.50 | 0.534 | | | | | | | 260 | 20.50 |
| Solaris | 2'183 | 23.93 | 0.682 | 540 | 22.90 | 0.213 | 241 | 24.21 | 0.078 | 2'964 | 23.76 | 0.336 | | | | | | | 2'964 | 23.76 |

Erntestatistik: Total geerntete Traubenmengen

| Sorte | kg | Brix | kg/m ² | kg | Brix | kg/m ² | kg | Brix | kg/m ² | kg | Brix | kg/m ² | kg | Brix | kg | Brix | kg | Brix | kg | Brix | | |
|-----------------|------------------|-------|-------------------|----------------|-------|-------------------|---------------|-------|-------------------|------------------|-------|-------------------|---------------|-------|--------------|-------|---------------|-------|----|------|------------------|-------|
| Cabernet Dorsa | 3'563 | 22.59 | 0.471 | 1'710 | 18.70 | 0.435 | | | | 5'273 | 21.33 | 0.459 | | | | | | | | | 5'273 | 21.33 |
| Kerner | 102 | 20.90 | 0.313 | | | | | | | 102 | 20.90 | 0.313 | | | | | | | | | 102 | 20.90 |
| Cabernet Mytos | 1'013 | 20.93 | 0.671 | | | | | | | 1'013 | 20.93 | 0.671 | | | | | | | | | 1'013 | 20.93 |
| Cabernet Jura | 1'809 | 21.18 | 0.276 | 1'510 | 23.57 | 0.375 | 2'941 | 20.75 | 0.474 | 6'260 | 21.55 | 0.373 | | | | | | | | | 6'260 | 21.55 |
| Dakapo | 1'216 | 19.22 | 0.704 | | | | | | | 1'216 | 19.22 | 0.704 | | | | | | | | | 1'216 | 19.22 |
| Cabernet Cortis | 996 | 22.38 | 0.683 | | | | | | | 996 | 22.38 | 0.683 | | | | | | | | | 996 | 22.38 |
| VB 91-26-04 | 1'112 | 22.09 | 0.626 | | | | | | | 1'112 | 22.09 | 0.626 | | | | | | | | | 1'112 | 22.09 |
| Cabertin | 770 | 19.60 | 0.720 | | | | | | | 770 | 19.60 | 0.720 | | | | | | | | | 770 | 19.60 |
| Dunkelfelder | 1'168 | 22.05 | 0.602 | | | | | | | 1'168 | 22.05 | 0.602 | | | | | | | | | 1'168 | 22.05 |
| VB 91-26-27 | | | | | | | 131 | 20.90 | 0.262 | 131 | 20.90 | 0.262 | | | | | | | | | 131 | 20.90 |
| Mara | 3'159 | 21.40 | 0.504 | | | | | | | 3'159 | 21.40 | 0.504 | | | | | | | | | 3'159 | 21.40 |
| Cal 1-20 | 1'000 | 21.60 | 0.556 | | | | | | | 1'000 | 21.60 | 0.556 | | | | | | | | | 1'000 | 21.60 |
| Prior | 538 | 20.49 | 0.584 | | | | | | | 538 | 20.49 | 0.584 | | | | | | | | | 538 | 20.49 |
| Cabernet franc | 182 | 20.55 | 0.467 | | | | | | | 182 | 20.55 | 0.467 | | | | | | | | | 182 | 20.55 |
| Cabernet Carbon | 400 | 21.10 | 0.644 | | | | | | | 400 | 21.10 | 0.644 | | | | | | | | | 400 | 21.10 |
| VB 32-07 | | | | 515 | 22.90 | 0.185 | | | | 515 | 22.90 | 0.185 | | | | | | | | | 515 | 22.90 |
| Cabernet Carol | 631 | 24.50 | 0.514 | | | | | | | 631 | 24.50 | 0.514 | | | | | | | | | 631 | 24.50 |
| Reselle | 1'284 | 19.52 | 0.650 | | | | | | | 1'284 | 19.52 | 0.650 | | | | | | | | | 1'284 | 19.52 |
| Teinturier | 105 | 19.80 | 0.583 | | | | | | | 105 | 19.80 | 0.583 | | | | | | | | | 105 | 19.80 |
| Maréchal Foch | 3'100 | 22.34 | 0.860 | | | | 1'400 | 23.40 | 0.454 | 4'500 | 22.67 | 0.673 | | | | | | | | | 4'500 | 22.67 |
| Gallota | 464 | 21.10 | | | | | | | | 464 | 21.10 | | | | | | | | | | 464 | 21.10 |
| Weisse Reben | | | | | | | | | | | | | 18'592 | 19.77 | 5'440 | 17.60 | 3'301 | 19.11 | | | 27'333 | 19.26 |
| Rote Reben | | | | | | | | | | | | | 42'983 | 21.74 | 2'730 | 18.90 | 22'161 | 20.58 | | | 67'874 | 21.25 |
| | | | | | | | | | | | | | | | | | | | | | | |
| | | | | | | | | | | | | | | | | | | | | | | |
| Total | 1'427'307 | | | 115'439 | | | 18'951 | | | 1'561'697 | | | 61'575 | | 8'170 | | 25'462 | | | | 1'656'904 | |

Erntestatistik: Total geerntete AOC Traubenmengen

| Sorte | Im Kanton Bern geerntete Menge | | | | | | | | | | | Eingekellert aus anderen Kantonen | | | | | | Gesamttotal | |
|--------------------------|--------------------------------|-------|-------------------|-----------|-------|-------------------|---------------|-------|-------------------|-------------|-------|-----------------------------------|------|------|------|------------|------|-------------|-------|
| | Bielersee | | | Thunersee | | | übrige Region | | | Kanton Bern | | Neuchâtel | | Vaud | | andere Kt. | | | |
| | kg | Brix | kg/m ² | kg | Brix | kg/m ² | kg | Brix | kg/m ² | kg | Brix | kg | Brix | kg | Brix | kg | Brix | | |
| Gutedel/Chasselas | 501'720 | 17.62 | 0.674 | | | | 2'700 | 16.79 | 0.967 | 504'420 | 17.61 | | | | | | | 504'420 | 17.61 |
| Blauburgunder/Pinot Noir | 549'476 | 21.76 | 0.656 | 36'185 | 21.32 | 0.547 | 5'941 | 19.33 | 0.568 | 591'602 | 21.71 | | | | | | | 591'602 | 21.71 |
| Riesling-Silvaner | 29'883 | 19.04 | 0.850 | 55'302 | 17.73 | 0.833 | 3'621 | 17.68 | 0.889 | 88'806 | 18.17 | | | | | | | 88'806 | 18.17 |
| Riesling | 2'491 | 19.91 | 0.706 | | | | | | | 2'491 | 19.91 | | | | | | | 2'491 | 19.91 |
| Sylvaner | 4'305 | 20.69 | 0.650 | | | | | | | 4'305 | 20.69 | | | | | | | 4'305 | 20.69 |
| Freisamer | 2'735 | 23.28 | 0.432 | | | | | | | 2'735 | 23.28 | | | | | | | 2'735 | 23.28 |
| Chardonnay | 75'346 | 21.21 | 0.639 | 320 | 21.80 | 0.800 | 30 | 20.30 | 0.429 | 75'696 | 21.22 | | | | | | | 75'696 | 21.22 |
| Pinot gris | 63'613 | 21.99 | 0.600 | 1'291 | 25.46 | 0.300 | | | | 64'904 | 22.06 | | | | | | | 64'904 | 22.06 |
| Pinot blanc | 12'337 | 21.34 | 0.725 | | | | | | | 12'337 | 21.34 | | | | | | | 12'337 | 21.34 |
| Gewürztraminer | 6'370 | 21.71 | 0.418 | 165 | 21.00 | 0.198 | | | | 6'535 | 21.69 | | | | | | | 6'535 | 21.69 |
| Elbling | | | | 230 | 18.90 | 0.958 | | | | 230 | 18.90 | | | | | | | 230 | 18.90 |
| Bianca | 4'400 | 20.66 | 0.830 | | | | | | | 4'400 | 20.66 | | | | | | | 4'400 | 20.66 |
| Zweigelt | 5'162 | 20.24 | 0.942 | | | | 69 | 21.60 | 0.986 | 5'231 | 20.26 | | | | | | | 5'231 | 20.26 |
| Diolinoir | 6'416 | 21.04 | 0.779 | 1'110 | 22.54 | 0.925 | | | | 7'526 | 21.26 | | | | | | | 7'526 | 21.26 |
| Sauvignon blanc | 55'512 | 20.99 | 0.683 | | | | | | | 55'512 | 20.99 | | | | | | | 55'512 | 20.99 |
| Gamay | 1'247 | 20.84 | 0.959 | | | | | | | 1'247 | 20.84 | | | | | | | 1'247 | 20.84 |
| Gamaret | 16'294 | 21.54 | 0.554 | 2'690 | 19.40 | 0.762 | | | | 18'984 | 21.24 | | | | | | | 18'984 | 21.24 |
| Garanoir | 4'731 | 20.62 | 0.422 | 1'735 | 18.68 | 0.413 | | | | 6'466 | 20.10 | | | | | | | 6'466 | 20.10 |
| Léon Millot | 966 | 21.95 | 0.676 | | | | 105 | 20.00 | 0.330 | 1'071 | 21.76 | | | | | | | 1'071 | 21.76 |
| Nobling | 2'900 | 20.18 | 0.916 | | | | | | | 2'900 | 20.18 | | | | | | | 2'900 | 20.18 |
| Seyval | 3'675 | 19.45 | 0.907 | 135 | 18.00 | 0.794 | | | | 3'810 | 19.40 | | | | | | | 3'810 | 19.40 |
| Syrah | 5'419 | 19.54 | 0.661 | | | | | | | 5'419 | 19.54 | | | | | | | 5'419 | 19.54 |
| Muscat | 4'547 | 19.11 | 0.700 | 900 | 18.50 | 0.544 | 150 | 19.40 | 0.333 | 5'597 | 19.02 | | | | | | | 5'597 | 19.02 |
| Regent | 11'035 | 20.10 | 0.714 | 8'819 | 19.58 | 0.500 | 1'289 | 18.75 | 0.831 | 21'143 | 19.80 | | | | | | | 21'143 | 19.80 |
| Cabernet-Sauvignon | 1'365 | 20.81 | 0.481 | | | | | | | 1'365 | 20.81 | | | | | | | 1'365 | 20.81 |
| Malbec | 10'932 | 20.28 | 0.823 | | | | | | | 10'932 | 20.28 | | | | | | | 10'932 | 20.28 |
| Dornfelder | 1'960 | 20.11 | 0.274 | | | | | | | 1'960 | 20.11 | | | | | | | 1'960 | 20.11 |
| St. Laurent | 2'327 | 20.87 | 0.497 | | | | | | | 2'327 | 20.87 | | | | | | | 2'327 | 20.87 |
| Bouvier | 300 | 19.20 | 0.857 | | | | | | | 300 | 19.20 | | | | | | | 300 | 19.20 |
| Viognier | 1'024 | 19.59 | 0.596 | | | | | | | 1'024 | 19.59 | | | | | | | 1'024 | 19.59 |
| Merlot | 1'348 | 20.21 | 0.515 | | | | | | | 1'348 | 20.21 | | | | | | | 1'348 | 20.21 |
| Charmont | 1'242 | 18.43 | 0.910 | | | | | | | 1'242 | 18.43 | | | | | | | 1'242 | 18.43 |
| Johanniter | 4'629 | 20.31 | 0.418 | | | | 333 | 20.70 | 0.666 | 4'962 | 20.33 | | | | | | | 4'962 | 20.33 |
| Chambourcin | 600 | 18.90 | 0.945 | | | | | | | 600 | 18.90 | | | | | | | 600 | 18.90 |
| Pinot Meunier | 290 | 19.80 | 0.673 | | | | | | | 290 | 19.80 | | | | | | | 290 | 19.80 |

Erntestatistik: Total geerntete AOC Traubenmengen

| Sorte | kg | Brix | kg/m ² | kg | Brix | kg/m ² | kg | Brix | kg/m ² | kg | Brix | kg | Brix | kg | Brix | kg | Brix | | |
|-----------------|------------------|-------|-------------------|----------------|-------|-------------------|---------------|-------|-------------------|------------------|-------|---------------|--------------|---------------|-------|----|------|------------------|-------|
| Carminoir | 260 | 20.50 | 0.534 | | | | | | | 260 | 20.50 | | | | | | | 260 | 20.50 |
| Solaris | 2'183 | 23.93 | 0.682 | 540 | 22.90 | 0.213 | 241 | 24.21 | 0.078 | 2'964 | 23.76 | | | | | | | 2'964 | 23.76 |
| Cabernet Dorsa | 3'563 | 22.59 | 0.471 | 1'710 | 18.70 | 0.435 | | | | 5'273 | 21.33 | | | | | | | 5'273 | 21.33 |
| Kerner | 102 | 20.90 | 0.313 | | | | | | | 102 | 20.90 | | | | | | | 102 | 20.90 |
| Cabernet Mytos | 1'013 | 20.93 | 0.671 | | | | | | | 1'013 | 20.93 | | | | | | | 1'013 | 20.93 |
| Cabernet Jura | 1'809 | 21.18 | 0.276 | 1'510 | 23.57 | 0.375 | 979 | 21.20 | 0.830 | 4'298 | 22.02 | | | | | | | 4'298 | 22.02 |
| Dakapo | 1'216 | 19.22 | 0.704 | | | | | | | 1'216 | 19.22 | | | | | | | 1'216 | 19.22 |
| Cabernet Cortis | 996 | 22.38 | 0.683 | | | | | | | 996 | 22.38 | | | | | | | 996 | 22.38 |
| VB 91-26-04 | 1'112 | 22.09 | 0.626 | | | | | | | 1'112 | 22.09 | | | | | | | 1'112 | 22.09 |
| Cabertin | 770 | 19.60 | 0.720 | | | | | | | 770 | 19.60 | | | | | | | 770 | 19.60 |
| Dunkelfelder | 1'168 | 22.05 | 0.602 | | | | | | | 1'168 | 22.05 | | | | | | | 1'168 | 22.05 |
| VB 91-26-27 | | | | | | | | | | | | | | | | | | | |
| Mara | 3'159 | 21.40 | 0.504 | | | | | | | 3'159 | 21.40 | | | | | | | 3'159 | 21.40 |
| Cal 1-20 | 1'000 | 21.60 | 0.556 | | | | | | | 1'000 | 21.60 | | | | | | | 1'000 | 21.60 |
| Prior | 538 | 20.49 | 0.584 | | | | | | | 538 | 20.49 | | | | | | | 538 | 20.49 |
| Cabernet franc | 182 | 20.55 | 0.467 | | | | | | | 182 | 20.55 | | | | | | | 182 | 20.55 |
| Cabernet Carbon | 400 | 21.10 | 0.644 | | | | | | | 400 | 21.10 | | | | | | | 400 | 21.10 |
| VB 32-07 | | | | 515 | 22.90 | 0.185 | | | | 515 | 22.90 | | | | | | | 515 | 22.90 |
| Cabernet Carol | 631 | 24.50 | 0.514 | | | | | | | 631 | 24.50 | | | | | | | 631 | 24.50 |
| Reselle | 1'284 | 19.52 | 0.650 | | | | | | | 1'284 | 19.52 | | | | | | | 1'284 | 19.52 |
| Teinturier | | | | | | | | | | | | | | | | | | | |
| Maréchal Foch | 3'100 | 22.34 | 0.860 | | | | 1'400 | 23.40 | 0.454 | 4'500 | 22.67 | | | | | | | 4'500 | 22.67 |
| Gallota | | | | | | | | | | | | | | | | | | | |
| Weisse Reben | | | | | | | | | | 16'041 | 19.90 | 5'440 | 17.60 | 3'301 | 38.61 | | | 24'782 | 21.89 |
| Rote Reben | | | | | | | | | | 41'853 | 21.80 | 2'730 | 18.90 | 12'307 | 62.54 | | | 56'890 | 30.47 |
| | | | | | | | | | | | | | | | | | | | |
| | | | | | | | | | | | | | | | | | | | |
| Total | 1'421'083 | | | 113'157 | | | 16'858 | | | 1'551'098 | | 57'894 | 8'170 | 15'608 | | | | 1'632'770 | |

Erntestatistik: Total geerntete Landwein-Traubenmengen

| Sorte | Im Kanton Bern geerntete Menge | | | | | | | | | Eingekellert aus anderen Kantonen | | | | | | Gesamttotal | | | | | | | | |
|--------------------------|--------------------------------|------|-------------------|-----------|-------|-------------------|---------------|------|-------------------|-----------------------------------|------|-----------|-------|------|------|-------------|--|------------|------|--|--|-------|-------|-------|
| | Bielersee | | | Thunersee | | | übrige Region | | | Kanton Bern | | Neuchâtel | | Vaud | | | | andere Kt. | | | | | | |
| | kg | Brix | kg/m ² | kg | Brix | kg/m ² | kg | Brix | kg/m ² | kg | Brix | kg | Brix | kg | Brix | | | kg | Brix | | | | | |
| Gutedel/Chasselas | | | | | | | | | | | | | | | | | | | | | | | | |
| Blauburgunder/Pinot Noir | | | | | 1'459 | 22.89 | 0.728 | | | | | 1459 | 22.89 | | | | | | | | | 1'459 | 22.89 | |
| Riesling-Silvaner | | | | | 658 | 18.87 | 1.456 | | | | | 658 | 18.87 | | | | | | | | | 658 | 18.87 | |
| Riesling | | | | | | | | | | | | | | | | | | | | | | | | |
| Sylvaner | | | | | | | | | | | | | | | | | | | | | | | | |
| Freisamer | | | | | | | | | | | | | | | | | | | | | | | | |
| Chardonnay | | | | | | | | | | | | | | | | | | | | | | | | |
| Pinot gris | | | | | 165 | 20.50 | 0.600 | | | | | 165 | 20.50 | | | | | | | | | | 165 | 20.50 |
| Pinot blanc | | | | | | | | | | | | | | | | | | | | | | | | |
| Gewürztraminer | | | | | | | | | | | | | | | | | | | | | | | | |
| Elbling | | | | | | | | | | | | | | | | | | | | | | | | |
| Bianca | | | | | | | | | | | | | | | | | | | | | | | | |
| Zweigelt | | | | | | | | | | | | | | | | | | | | | | | | |
| Diolinoir | | | | | | | | | | | | | | | | | | | | | | | | |
| Sauvignon blanc | | | | | | | | | | | | | | | | | | | | | | | | |
| Gamay | | | | | | | | | | | | | | | | | | | | | | | | |
| Gamaret | | | | | | | | | | | | | | | | | | | | | | | | |
| Garanoir | | | | | | | | | | | | | | | | | | | | | | | | |
| Léon Millot | | | | | | | | | | | | | | | | | | | | | | | | |
| Nobling | | | | | | | | | | | | | | | | | | | | | | | | |
| Seyval | | | | | | | | | | | | | | | | | | | | | | | | |
| Syrah | | | | | | | | | | | | | | | | | | | | | | | | |
| Muscat | | | | | | | | | | | | | | | | | | | | | | | | |
| Regent | | | | | | | | | | | | | | | | | | | | | | | | |
| Cabernet-Sauvignon | | | | | | | | | | | | | | | | | | | | | | | | |
| Malbec | | | | | | | | | | | | | | | | | | | | | | | | |
| Dornfelder | | | | | | | | | | | | | | | | | | | | | | | | |
| St. Laurent | | | | | | | | | | | | | | | | | | | | | | | | |
| Bouvier | | | | | | | | | | | | | | | | | | | | | | | | |
| Viognier | | | | | | | | | | | | | | | | | | | | | | | | |
| Merlot | | | | | | | | | | | | | | | | | | | | | | | | |
| Charmont | | | | | | | | | | | | | | | | | | | | | | | | |
| Johanniter | | | | | | | | | | | | | | | | | | | | | | | | |
| Chambourcin | | | | | | | | | | | | | | | | | | | | | | | | |
| Pinot Meunier | | | | | | | | | | | | | | | | | | | | | | | | |

Erntestatistik: Total geerntete Landwein-Traubenmengen

| Sorte | kg | Brix | kg/m ² | kg | Brix | kg/m ² | kg | Brix | kg/m ² | kg | Brix | kg | Brix | kg | Brix | kg | Brix |
|-----------------|------------|-------|-------------------|--------------|------|-------------------|--------------|-------|-------------------|--------------|-------|--------------|------|--------------|-------|---------------|-------|
| Carminoir | | | | | | | | | | | | | | | | | |
| Solaris | | | | | | | | | | | | | | | | | |
| Cabernet Dorsa | | | | | | | | | | | | | | | | | |
| Kerner | | | | | | | | | | | | | | | | | |
| Cabernet Mytos | | | | | | | | | | | | | | | | | |
| Cabernet Jura | | | | | | | 1'962 | 20.52 | 0.391 | 1962 | 20.52 | | | | | 1'962 | 20.52 |
| Dakapo | | | | | | | | | | | | | | | | | |
| Cabernet Cortis | | | | | | | | | | | | | | | | | |
| VB 91-26-04 | | | | | | | | | | | | | | | | | |
| Cabertin | | | | | | | | | | | | | | | | | |
| Dunkelfelder | | | | | | | | | | | | | | | | | |
| VB 91-26-27 | | | | | | | 131 | 20.90 | 0.262 | 131 | 20.90 | | | | | 131 | 20.90 |
| Mara | | | | | | | | | | | | | | | | | |
| Cal 1-20 | | | | | | | | | | | | | | | | | |
| Prior | | | | | | | | | | | | | | | | | |
| Cabernet franc | | | | | | | | | | | | | | | | | |
| Cabernet Carbon | | | | | | | | | | | | | | | | | |
| VB 32-07 | | | | | | | | | | | | | | | | | |
| Cabernet Carol | | | | | | | | | | | | | | | | | |
| Reselle | | | | | | | | | | | | | | | | | |
| Teinturier | 105 | 19.80 | 0.583 | | | | | | | 105 | 19.80 | | | | | 105 | 19.80 |
| Maréchal Foch | | | | | | | | | | | | | | | | | |
| Gallota | 464 | 21.10 | | | | | | | | 464 | 21.10 | | | | | 464 | 21.10 |
| Weisse Reben | | | | | | | | | | 2'551 | 19.10 | | | | | 2'551 | 19.10 |
| Rote Reben | | | | | | | | | | 1'130 | 21.10 | | | 9'854 | 19.47 | 10'984 | 19.64 |
| | | | | | | | | | | | | | | | | | |
| | | | | | | | | | | | | | | | | | |
| | | | | | | | | | | | | | | | | | |
| Total | 569 | | | 2'282 | | | 2'093 | | | 4'944 | | 3'681 | | 9'854 | | 18'479 | |

Erntestatistik: Total geerntete Traubensaftmengen

| Sorte | Im Kanton Bern geerntete Menge | | | | | | | | | | | Eingekellert aus anderen Kantonen | | | | | | Gesamttotal | | |
|--------------------------|--------------------------------|-------|-------------------|-----------|------|-------------------|---------------|------|-------------------|-------------|------|-----------------------------------|------|------|------|------------|------|-------------|-------|-------|
| | Bielersee | | | Thunersee | | | übrige Region | | | Kanton Bern | | Neuchâtel | | Vaud | | andere Kt. | | | | |
| | kg | Brix | kg/m ² | kg | Brix | kg/m ² | kg | Brix | kg/m ² | kg | Brix | kg | Brix | kg | Brix | kg | Brix | kg | Brix | |
| Gutedel/Chasselas | 5'655 | 16.52 | | | | | | | | | 5655 | 16.52 | | | | | | | 5'655 | 16.52 |
| Blauburgunder/Pinot Noir | | | | | | | | | | | | | | | | | | | | |
| Riesling-Silvaner | | | | | | | | | | | | | | | | | | | | |
| Riesling | | | | | | | | | | | | | | | | | | | | |
| Sylvaner | | | | | | | | | | | | | | | | | | | | |
| Freisamer | | | | | | | | | | | | | | | | | | | | |
| Chardonnay | | | | | | | | | | | | | | | | | | | | |
| Pinot gris | | | | | | | | | | | | | | | | | | | | |
| Pinot blanc | | | | | | | | | | | | | | | | | | | | |
| Gewürztraminer | | | | | | | | | | | | | | | | | | | | |
| Elbling | | | | | | | | | | | | | | | | | | | | |
| Bianca | | | | | | | | | | | | | | | | | | | | |
| Zweigelt | | | | | | | | | | | | | | | | | | | | |
| Diolinoir | | | | | | | | | | | | | | | | | | | | |
| Sauvignon blanc | | | | | | | | | | | | | | | | | | | | |
| Gamay | | | | | | | | | | | | | | | | | | | | |
| Gamaret | | | | | | | | | | | | | | | | | | | | |
| Garanoir | | | | | | | | | | | | | | | | | | | | |
| Léon Millot | | | | | | | | | | | | | | | | | | | | |
| Nobling | | | | | | | | | | | | | | | | | | | | |
| Seyval | | | | | | | | | | | | | | | | | | | | |
| Syrah | | | | | | | | | | | | | | | | | | | | |
| Muscat | | | | | | | | | | | | | | | | | | | | |
| Regent | | | | | | | | | | | | | | | | | | | | |
| Cabernet-Sauvignon | | | | | | | | | | | | | | | | | | | | |
| Malbec | | | | | | | | | | | | | | | | | | | | |
| Dornfelder | | | | | | | | | | | | | | | | | | | | |
| St. Laurent | | | | | | | | | | | | | | | | | | | | |
| Bouvier | | | | | | | | | | | | | | | | | | | | |
| Viognier | | | | | | | | | | | | | | | | | | | | |
| Merlot | | | | | | | | | | | | | | | | | | | | |
| Charmont | | | | | | | | | | | | | | | | | | | | |
| Johanniter | | | | | | | | | | | | | | | | | | | | |
| Chambourcin | | | | | | | | | | | | | | | | | | | | |
| Pinot Meunier | | | | | | | | | | | | | | | | | | | | |

Erntestatistik: Total geerntete Traubensaftmengen

| Sorte | kg | Brix | kg/m ² | kg | Brix | kg/m ² | kg | Brix | kg/m ² | kg | Brix | kg | Brix | kg | Brix | kg | Brix |
|-----------------|--------------|------|-------------------|----|------|-------------------|----|------|-------------------|--------------|------|----|------|----|------|----|--------------|
| Carminoir | | | | | | | | | | | | | | | | | |
| Solaris | | | | | | | | | | | | | | | | | |
| Cabernet Dorsa | | | | | | | | | | | | | | | | | |
| Kerner | | | | | | | | | | | | | | | | | |
| Cabernet Mytos | | | | | | | | | | | | | | | | | |
| Cabernet Jura | | | | | | | | | | | | | | | | | |
| Dakapo | | | | | | | | | | | | | | | | | |
| Cabernet Cortis | | | | | | | | | | | | | | | | | |
| VB 91-26-04 | | | | | | | | | | | | | | | | | |
| Cabertin | | | | | | | | | | | | | | | | | |
| Dunkelfelder | | | | | | | | | | | | | | | | | |
| VB 91-26-27 | | | | | | | | | | | | | | | | | |
| Mara | | | | | | | | | | | | | | | | | |
| Cal 1-20 | | | | | | | | | | | | | | | | | |
| Prior | | | | | | | | | | | | | | | | | |
| Cabernet franc | | | | | | | | | | | | | | | | | |
| Cabernet Carbon | | | | | | | | | | | | | | | | | |
| VB 32-07 | | | | | | | | | | | | | | | | | |
| Cabernet Carol | | | | | | | | | | | | | | | | | |
| Reselle | | | | | | | | | | | | | | | | | |
| Teinturier | | | | | | | | | | | | | | | | | |
| Maréchal Foch | | | | | | | | | | | | | | | | | |
| Gallota | | | | | | | | | | | | | | | | | |
| Weisse Reben | | | | | | | | | | | | | | | | | |
| Rote Reben | | | | | | | | | | | | | | | | | |
| | | | | | | | | | | | | | | | | | |
| | | | | | | | | | | | | | | | | | |
| | | | | | | | | | | | | | | | | | |
| Total | 5'655 | | | | | | | | | 5'655 | | | | | | | 5'655 |